

ESPRIT CAM SYSTEM FOR MORI SEIKI

Including Factory Tested Post Processing and Machine Simulation

Mori Seiki and DP Technology have collaborated technically in response to increasing demand from users who desire software that yields better production value and greater machining utilization. The result is a CAM solution that streamlines operations on the shop floor and simplifies the programming process. Mori Seiki and DP Technology continue ongoing development to maintain a suite of post processors and machining configurations within ESPRIT to support the full line of Mori Seiki machine tools.

The ESPRIT® CAM System for Mori Seiki Includes:

- ESPRIT® SolidMill® for 2–5 axis milling and/or
- ESPRIT® SolidTurn® for 2–22 axis turning and/or
- ESPRIT® SolidMillTurn® for multitasking and B-axis machines
- Factory tested post processing for Mori Seiki Machine Tools*
- Solid simulation and verification for Mori Seiki Machines
- And more as outlined in the ESPRIT General Specifications

The high-performance ESPRIT system offers powerful programming for any CNC machine tool. ESPRIT's full-spectrum functionality includes programming for 2–5 axis milling, 2–22 axis turning, multitasking mill-turn machining, and B-axis machine tools. Streamline your operations with the powerful and flexible ESPRIT system, valued by CNC programmers for its extensive suite of machining cycles, comprehensive tool control and capacity to fully support an entire shop.

dptechnology.com/moriseiki

CONTACT US

Corporate Offices
1150 Avenida Acaso
Camarillo, CA 93012
USA

Tel: +1 (805) 388-6000
Fax: +1 (805) 388-3085
Toll Free: (800) 627-8479

dptechnology.com
esprit@dptechnology.com

Midwest USA
1001 E. Touhy Ave
Suite #300
Des Plaines, IL 60018

Tel: (847) 297-8100
Fax: (847) 297-8107

East USA
8535 Cliff Cameron Drive
Suite #112
Charlotte, NC 28269

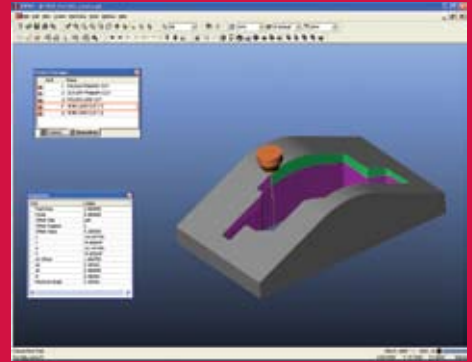
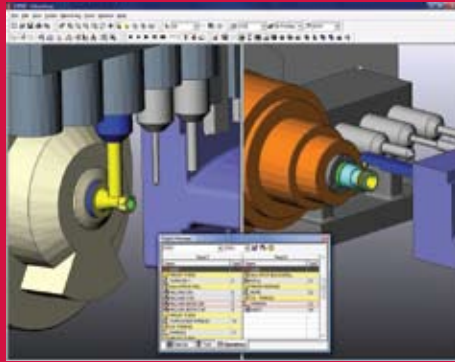
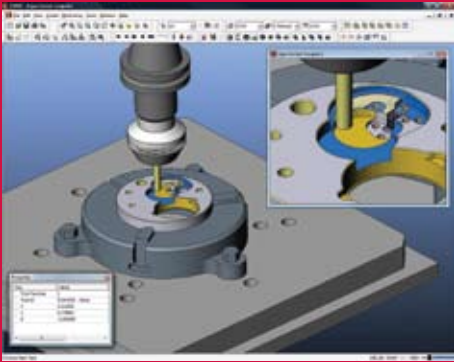
Tel: (704) 594-9551
Fax: (704) 594-9802

MORI SEIKI
THE MACHINE TOOL COMPANY



ESPRIT®

The Right Choice



ESPRIT is a high-performance computer-aided manufacturing (CAM) system for a full range of machine tool applications.

ESPRIT's high-performance capabilities include machining any part geometry (solid, surface, or wireframe), universal post processing to format G-code for virtually any machine tool, and solid simulation and verification with dry runs rendered in dynamic solids for optimal part quality and consistency. ESPRIT is 100% pure Windows®, and provides a comfortable and familiar user interface for maximum productivity.

ESPRIT for Mori Seiki is a member of the ESPRIT family of CAM software which also includes powerful, full-spectrum programming for:

- 2-5 axis milling*
- 2-22 axis turning
- 2-5 axis wire EDM*
- Multitasking mill-turn machining
- B-axis machine tools*
- High-speed 3- and 5-axis machining*

*ESPRIT support programming for virtually any machine tool make and model.

U.S. Patents 6,907,313; 7,058,472
Other U.S. and foreign patents pending.

© 2008 DP Technology Corp.
All Rights Reserved

ESPRIT for Mori Seiki General Specifications

- Machining and modeling of any part geometry powered by
 - Parasolid® solid modeler
 - ACIS® solid modeler
 - NURBS surface modeler
 - STL modeler**
 - 2D/3D wire frame modeler
 - Drawing, dimensioning, and annotation
- Universal post processing
 - Factory tested for Mori Seiki*
- Solid simulation and verification
 - Dry runs in dynamic solids
 - Rendered within the complete machining environment: machine tool, fixtures, stock, and workpiece
 - Exhaustive collision detection: tool, stock, fixtures, and workpiece
 - “As-machined” versus “as-designed” part inspection
- 100% pure Windows® application
 - Designed for:
 - Microsoft Windows® XP and Windows® Vista
 - Microsoft® SQL Server™
 - Integrates with Microsoft® Office for shop-floor documentation
 - Dynamic graphics delivered by OpenGL®
 - Customizable user interface, toolbars and menus
 - HTML-based context-sensitive online help
- Adaptive machining cycles
 - Adapts to varying part geometry
 - Automates engineering changes and part families
 - Extensive tool control
- Microsoft® Visual Basic® for Applications (VBA)
- ESPRIT Component Object Model (COM)-based Application Programming Interface (API)
- Automated Feature Recognition
- High-speed machining and G-code optimization
- G-Code text editor and DNC RS232 communication program
- Network floating licenses**
- Data Exchange
 - ESPRIT reads data from the following native formats: ACIS® (SAT), AutoCAD (DWG), CSV, DXF™, Autodesk Inventor®, IGES, Mechanical Desktop®, Parasolid® (X_B, X_T), Solid Edge®, SolidWorks®, TXT, VDA-FS. Optional data readers are available for: CATIA®, Pro/ENGINEER®, Unigraphics®, STEP, STL.
- Local Language Support
 - Chinese (PRC), Chinese (Taiwan), Czech, English, French, German, Italian, Japanese, Korean, Polish, Spanish, Swedish, and Turkish.

Note: *Check with DP Technology for the most current versions of Mori Seiki post processors.
**Optional component

dptechnology.com/moriseiki



The Right Choice

Los Angeles | Chicago | Charlotte | Tokyo | Shanghai | Montpellier | Florence | Nuremberg